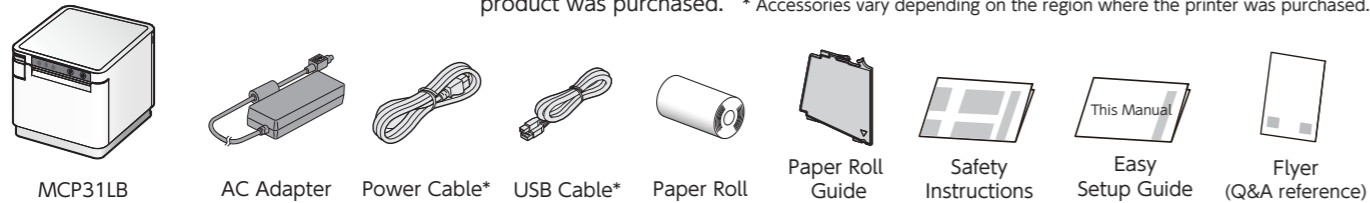


Introduction

This document explains the procedures for use of mC-Print3. Please store it carefully after reading it.

Check the Supplied Accessories

If any of the package contents are missing or damaged, contact the dealer where the product was purchased. * Accessories vary depending on the region where the printer was purchased.



What the utility can do

The utility can be used to change the settings of the printer and peripheral devices.

- Examples)
- Bluetooth pairing
 - Bluetooth settings, LAN settings
 - Firmware update/diagnosis
 - memory switch changes, logo registration
 - Sample printing etc.

mC-Print3 Utility Download
www.star-m.jp/mcprint-app.html



● To use the utility, download it from the site at right. ➔

● To perform setup using this manual, proceed to Step 1.

In Case of Trouble

If you experience trouble with the setup procedure, refer to the Online Manual.
 Place the enclosed flyer close to the printer and use it when necessary.

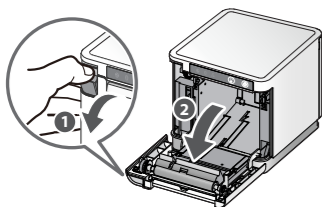
mC-Print3 Online Manual
www.star-m.jp/mcprint3-oml.html



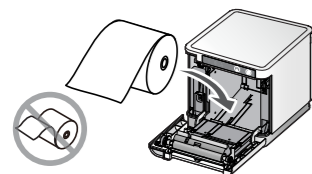
Installing the Printer

1 Installing the paper roll

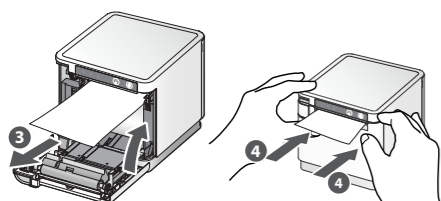
Pull the open lever ❶ and open the printer cover ❷.



Take the slack of the paper roll before paper setting, insert the paper roll as shown in the illustration.



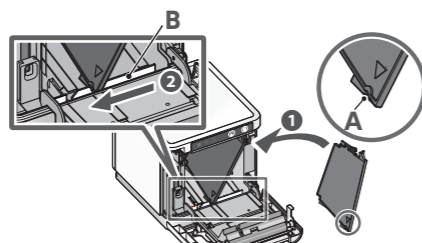
Pull the end of the paper roll out straight ❸, and use both hands to close the printer cover ❹.



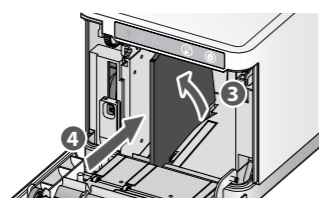
❶ When using a 58 mm roll, install the provided paper roll guide.

With the notch part A (triangle mark) of the paper roll guide facing down, angle the guide to the right and insert it ❶.

Position so that the notch part A is aligned with the main unit rib B, then slide the guide from the right ❷.



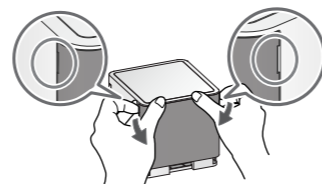
When the slid paper roll guide stops, stand it up vertical ❸, and press until it clicks into place ❹.



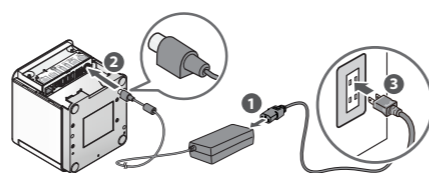
To change the paper width, it is necessary to change the memory switch setting. For details, refer to the Online Manual.

2 Turning ON the main unit power

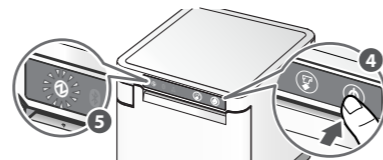
Place your nails into the gaps in the right and left sides of the rear cover on the back of the printer, and then remove the cover.



Connect the power cable to the AC adapter ❶, and connect the cable connector to the printer as shown in the illustration ❷. Insert the plug into the outlet ❸.



Press the power button ❹ and confirm that the LED (blue) illuminates ❺.

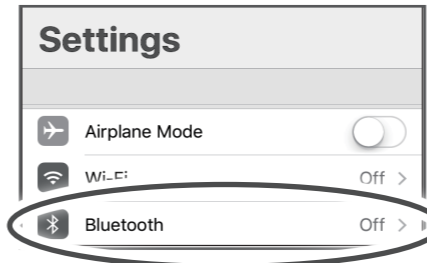


Connecting a Tablet or PC to the Printer

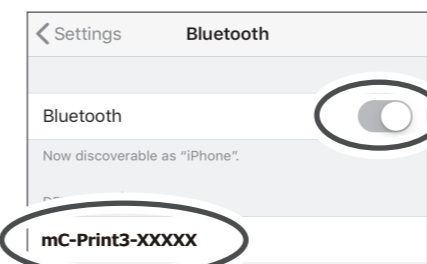
3-A Connecting an iOS terminal to the printer

Bluetooth interface

Open the smartphone/tablet settings screen and select Bluetooth.

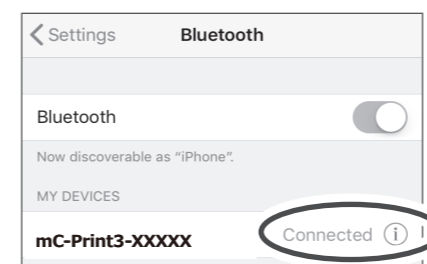


Turn on Bluetooth.
 Select the displayed device name (mC-Print3-XXXX).



❶ The device name that is displayed during pairing varies depending on the product. It can be checked from ***Bluetooth Information*** [Dev Name] in the list that is printed at printer test printing. (For test printing, turn power ON while holding down the FEED button.)

When "Connected" is displayed, pairing is completed.



USB interface

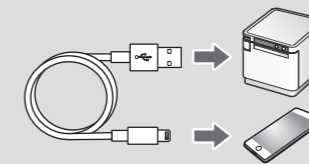
You will need:

- Commercially available Lightning cable or Lightning cable that was provided with the smartphone/tablet.

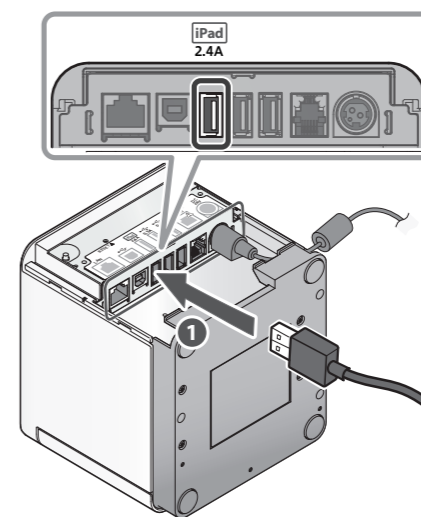


Printer-side plug (Type A)

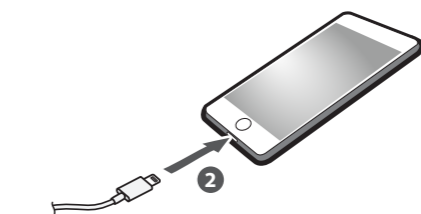
Image of connection



Connect the Lightning cable to the printer USB port (2.4A) ❶.



Connect the other plug to the smartphone/tablet ❷.



Wired LAN interface

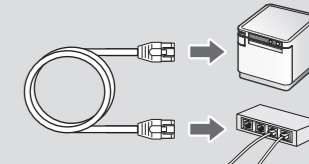
You will need:

- Commercially-available LAN cable

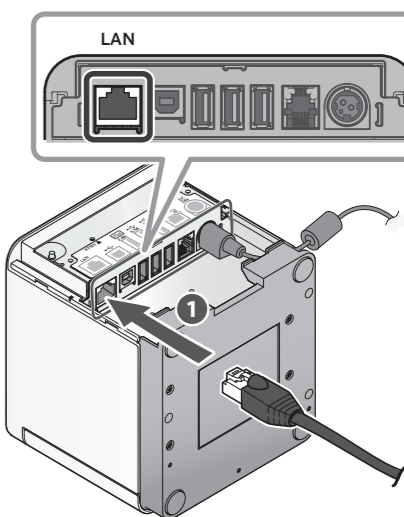


Printer-side plug

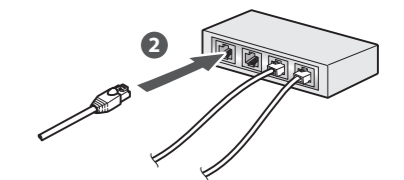
Image of connection



Connect the LAN cable to the printer LAN connector ❶.



Connect the other plug to the connector of the router, hub, or other LAN device ❷.

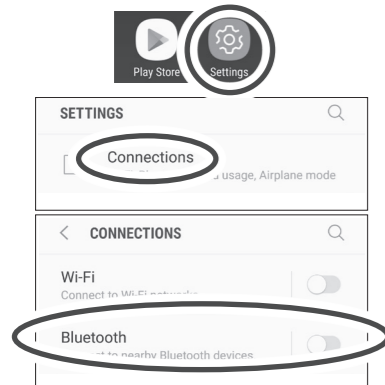


❶ DHCP is enabled by default for the wired LAN settings. To continually use the same IP address, set a static IP address before use.
 For the static IP address setting procedure, refer to the Online Manual.

3-B Connecting an Android terminal to the printer

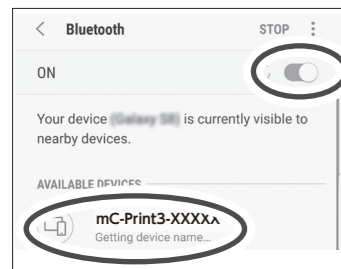
Bluetooth interface

Open the smartphone/tablet Settings - Connection screen and select Bluetooth.

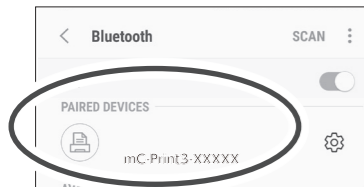


Turn on Bluetooth. Select the displayed device name (mC-Print3-XXXX).

i The device name that is displayed during pairing varies depending on the product. It can be checked from ***Bluetooth Information*** [Dev Name] in the list that is printed at printer test printing (For test printing, turn power ON while holding down the FEED button.)



When the selected device name is displayed in "PAIRED DEVICES", pairing is completed.



USB interface

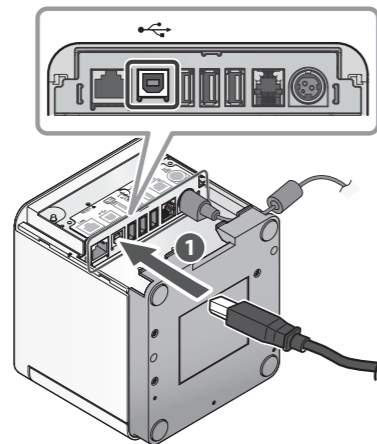
You will need:

- Prepare a USB cable and USB adapter according to the connector shape of the smartphone/tablet that you use.

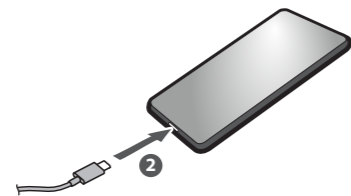


Printer-side plug (Type B)

Connect the USB cable to the printer USB port (Type B) ①.



Connect the other plug to the smartphone/tablet ②.



Wired LAN interface

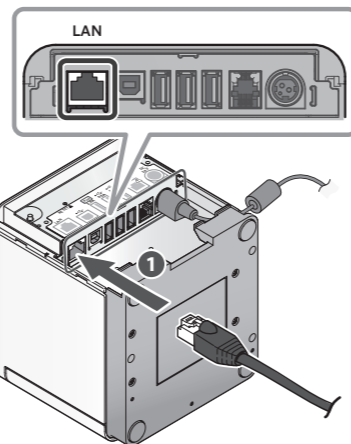
You will need:

- Commercially-available LAN cable

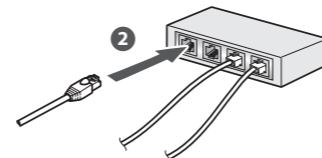


Printer-side plug

Connect the LAN cable to the printer LAN connector ①.



Connect the other plug to the connector of the router, hub, or other LAN device ②.



i DHCP is enabled by default for the wired LAN settings. To continually use the same IP address, set a static IP address before use. For the static IP address setting procedure, refer to the Online Manual.

3-C Connecting a Mac/Linux terminal to the printer

Download the Mac CUPS driver or Linux CUPS driver. For details, refer to the Online Manual.

- Download the Mac CUPS driver www.star-m.jp/mac-cps.html

- Download the Linux CUPS driver www.star-m.jp/linux-cps.html

Initializing the communication settings (For Bluetooth and Wired LAN Interface)

If the communication connection is not successful, follow the procedure below and initialize the communication setting.

After initialization, perform connection again starting from the beginning of 3-A, B, or D.

<Procedure>

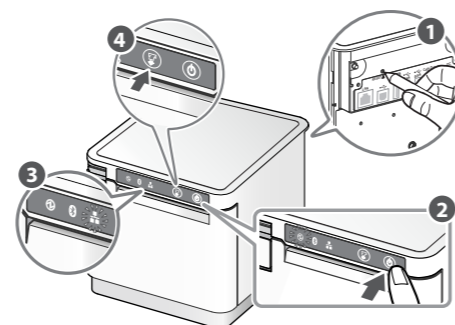
Check that the printer power is OFF. Insert a pen with a small tip or similar item and press the RESET switch on the back ①. At the same time, press the power switch on the front of the printer until the POWER LED turns on (power ON) ②.

Keep pressing RESET switch until the Network LED (green) on the front of the printer flashes ③.

Press the FEED button ④ and select the type of communication setting to initialize*, then press and hold the FEED button ④ to confirm.

* Flashing pattern table

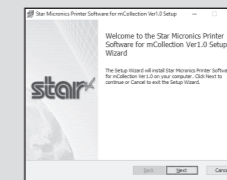
	Initializing the wired LAN settings
	Initializing the Bluetooth settings
	Initializing the wired LAN and Bluetooth settings



3-D Connecting a Windows tablet or PC terminal to the printer

Installing the Windows driver

- 1 Download [mCollection Printer Software].
 - 2 Extract the downloaded software and execute "Setup.exe".
 - 3 Follow the wizard instructions and complete software installation.
- i** The Windows driver is included in the mCollection Printer Software. The mCollection Printer Software can be used to configure the printer settings and perform an operation test.



Download the StarPRNT for mCollection Windows driver



www.star-m.jp/mcprint-wsw.html

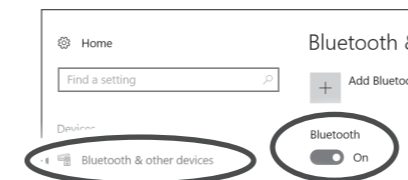
Bluetooth interface

Windows 10

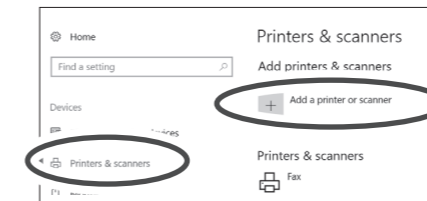
*For the procedures on Windows 7, 8 or 8.1, refer to the online manual.

Open Settings and select [Devices] - [Bluetooth & other devices].

Turn on Bluetooth.

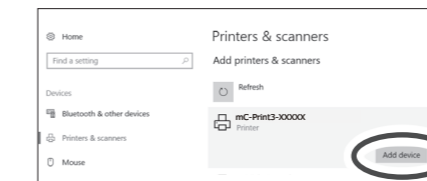


Select [Printers & scanners] - [Add printer or scanner].

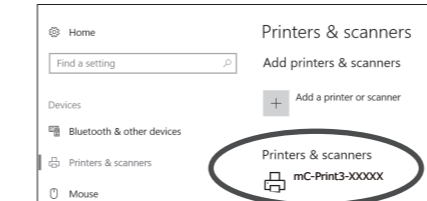


Select the displayed device name (mC-Print3-XXXX) and click or tap [Add device].

i The device name that is displayed during pairing varies depending on the product. It can be checked from ***Bluetooth Information*** [Dev Name] in the list that is printed at printer test printing (For test printing, turn power ON while holding down the FEED button.)



When the device appears in "Printers & Scanners", pairing is completed.



i After a few moments, the message "Driver is unavailable" will be displayed, however pairing is completed.

USB interface

You will need:

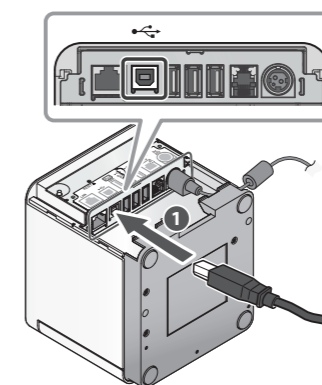
- Prepare a USB cable and USB adapter according to the connector shape of the tablet or PC that you use.



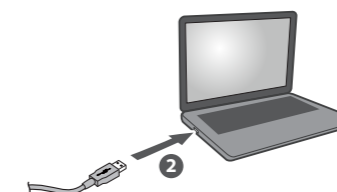
Printer-side plug (Type B)

i Be sure to install the Windows driver before connecting the USB cable.

Connect the USB cable to the printer USB (Type B) connector ①.



Connect the other plug to the connector of the Windows tablet/PC ②.



Wired LAN interface

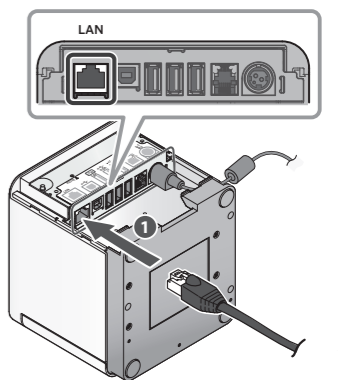
You will need:

- Commercially-available LAN cable

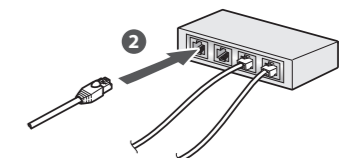


Printer side Plug

Connect the LAN cable to the printer LAN connector ①.



Connect the other plug to the connector of the router, hub, or other LAN device ②.



i DHCP is enabled by default for the wired LAN settings. To continually use the same IP address, set a static IP address before use. For the static IP address setting procedure, refer to the Online Manual.

Installing the rear cover

Installing the rear cover onto the back of the printer

Press the hooks A at the bottom of the rear cover into the notches in the printer main unit

①, then fit the hooks B on the left and right of the rear cover into the printer main unit until they click into place ②.

